

MT. CARMEL ROMAN CATHOLIC

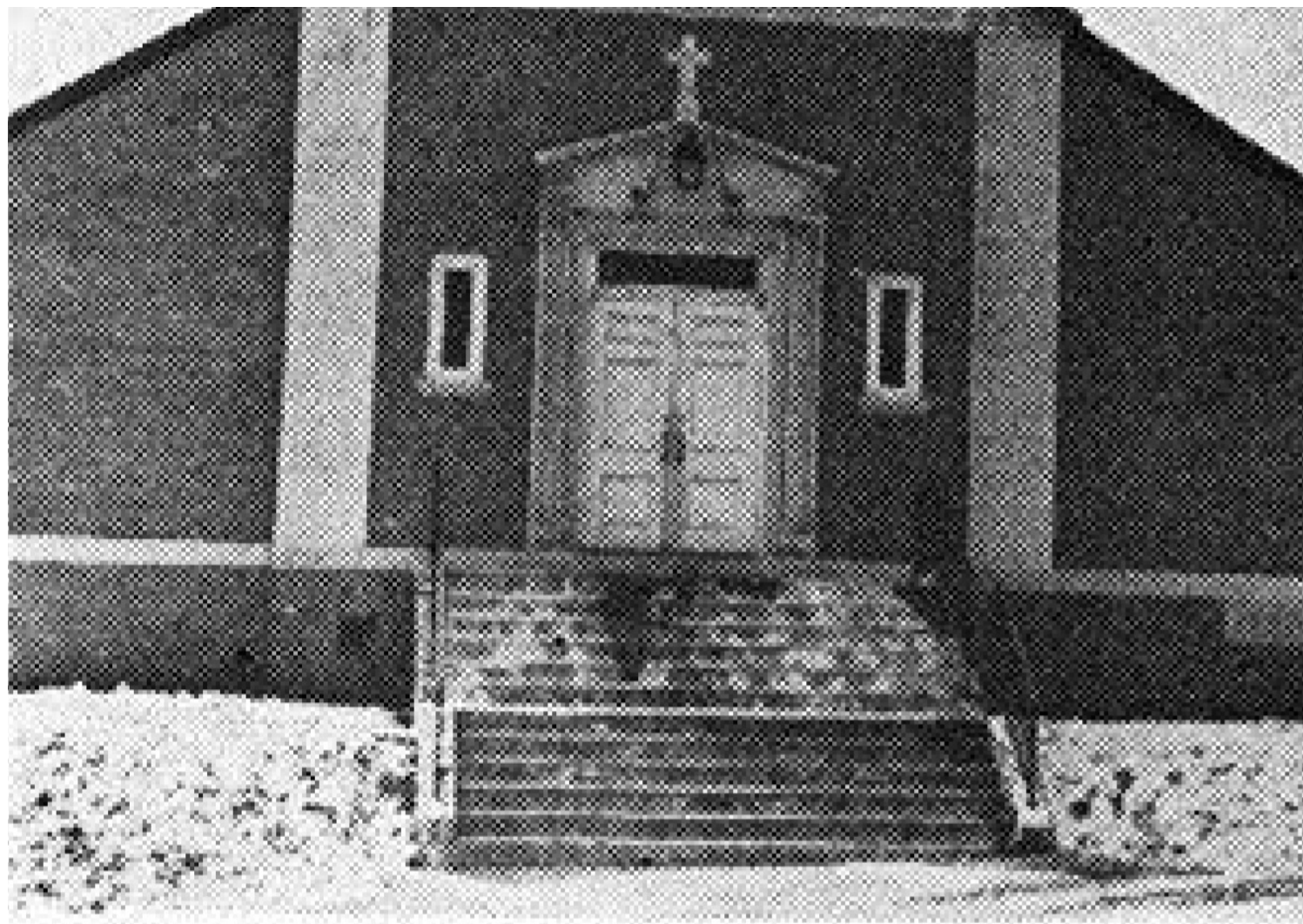
OUR LADY OF MT. CARMEL Roman Catholic Church, Nutley, New Jersey was established in May 13, 1925, for the Polish people of Nutley and Belleville, New Jersey. Reverend John A. Iwanow, formerly pastor of St. Valentine's Roman Catholic Church, Bloomfield, N.J. was made pastor of a small gray cinder block building, seating 120 people at 91 Franklin Ave., Nutley, N.J.

This was purchased by Newark Diocese from the corporation known as Catholic Apostolic Roman National Italian Church of Our Lady of Mt. Carmel on May 19, 1925. Reverend Iwanow was pastor for 18 years. After his death in October 1944, Reverend Wenceslaus Niedzwiecki, a curate of the parish became administrator for four years until October 28, 1948, when Reverend Francis P. Czechowski, a curate at Our Lady of Mt. Carmel Roman Catholic Church, Bayonne, N.J., was made pastor of the Mt. Carmel parish church.

In nineteen months the new pastor built a new \$36,000 rectory on 120 Prospect St., Nutley, N.J. and became first resident pastor of Mt. Carmel parish on July 1, 1950. Six months later on December 17, 1950, he completed the construction of a new church of colonial architecture with seating capacity of 300 at 293 Harrison St., Nutley, N.J.

At present time Reverend Hubert Funk, professor of Physics, Seton Hall University, has been weekend assistant during the past four years, taking the place of the late Reverend Marion Wojeik who was a member of the Marion Fathers of Massachusetts and was weekend assistant at Mt. Carmel parish from July 1, 1950, to August 1956.





MT. CARMEL ROMAN CATHOLIC

Tags

- [Churches](#)