

25 Nutley Sights You Can No Longer See

Curated by Anthony Buccino

Many of these Nutley, New Jersey, locations have been gone for generations. A few would appear in some more recent memories by those of us walking these tree-lined streets.

The Nutley Historical Society is dedicated to serve the educational, cultural, and historical needs of our community. That would include keeping a door open to our past structures and other sights that may no longer exist but played a part in making Nutley what it is today.

Here, we offer a brief glimpse of twenty-five Nutley sights you can no longer see.

Annie Oakley's house



Home in Nutley, New Jersey, formerly 300 Grant Ave.

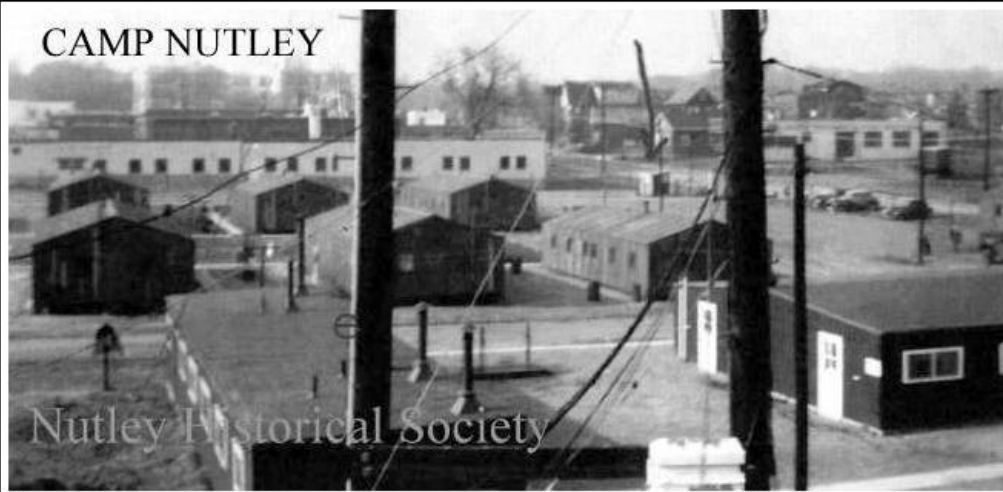
Annie Oakley house

Avondale School at Passaic & Park



Avondale School, Passaic Avenue & Park Avenue, Nutley NJ

Camp Nutley Anti-Aircraft Battery



Camp Nutley Anti Aircraft Battery, Park Avenue, Nutley NJ

Former site of Battery A of the 98th AAA Gun Battalion,
locally known as

"CAMP NUTLEY"

An active duty US Army Military Camp from 1952-1957.
Its Four Radar Controlled 90mm Guns were tasked to
defend the George Washington Bridge from Aerial Attack.

Dedicated to the Men who served here.
"We Were Ready"

Dedicated September 22, 2011-Nutley Board of Commissioners

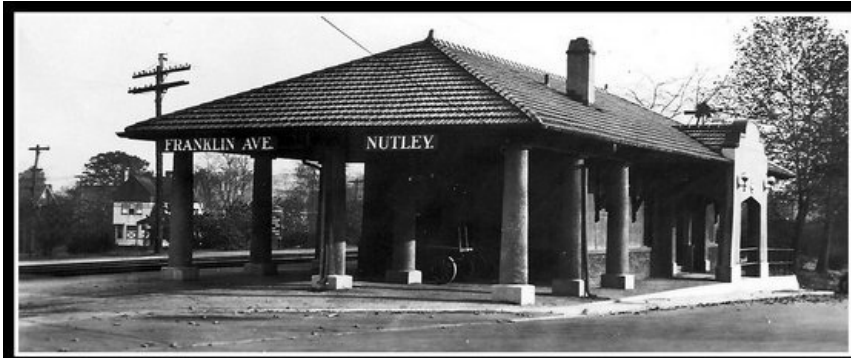
Camp Nutley Anti Aircraft Battery, Park Avenue, Nutley NJ

Feland House, The Enclosure



Feland House, The Enclosure, Nutley NJ

Franklin Ave/High Street Train Station, West Nutley Station



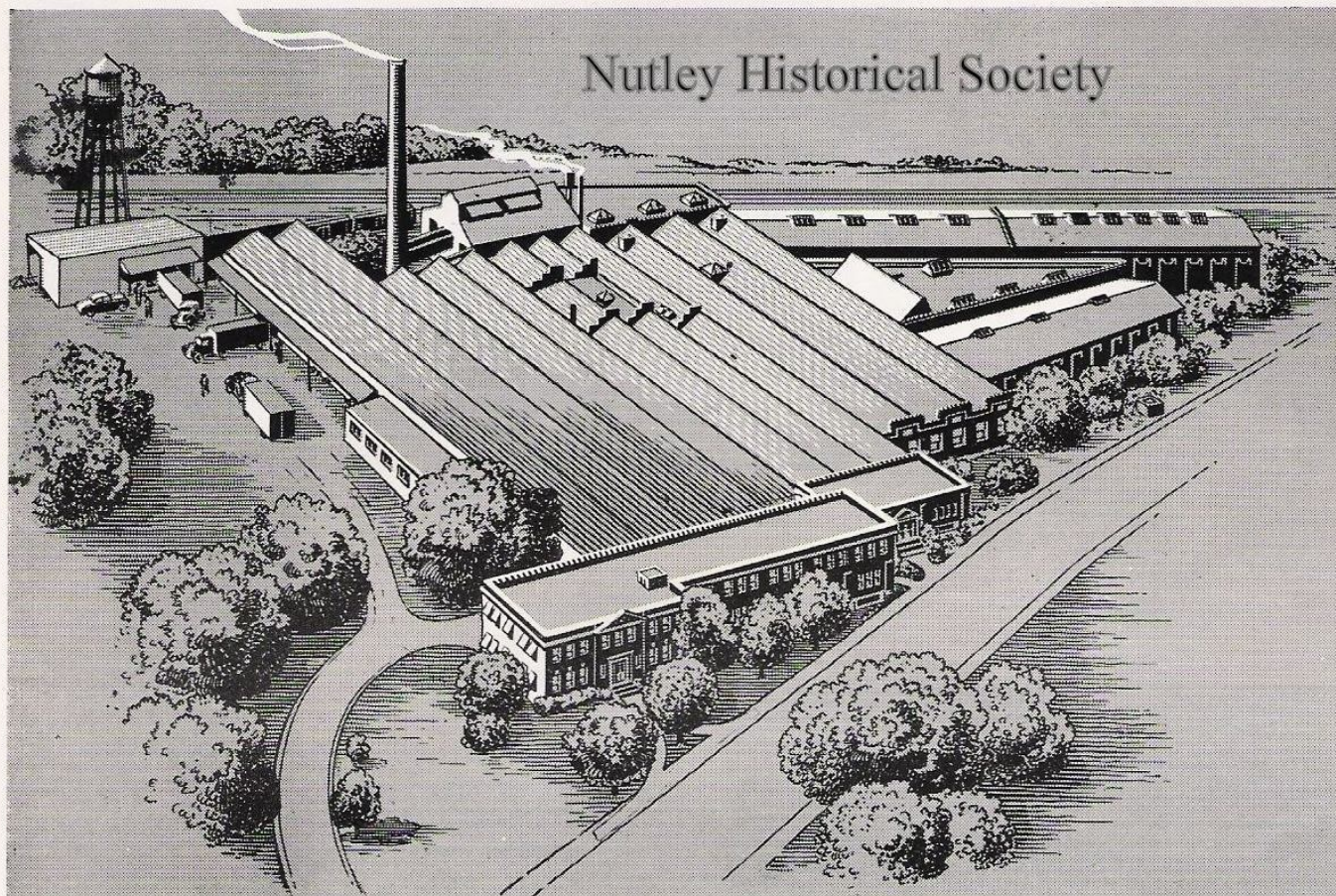
Franklin Avenue, Nutley, NJ

Franklin Diner, Centre Street, Nutley NJ



Franklin Diner, Centre Street, Jack Falat photo

George La Monte & Son Safety Paper



George La Monte and Son — Makers of Safety Paper since 1871

George La Monte and Son, Kingsland Street, Nutley NJ

Hoffman LaRoche, Building One, 1928



Hoffmann - LaRoche Inc., Pharmaceutical and Chemical Manufacturers; "ground broken"—Nov. 17, 1928

Hoffman-LaRoche Building One, Nutley NJ

ITT, International Telephone & Telegraph, Radar Tower

ITT Research Tower 1947 - 1996

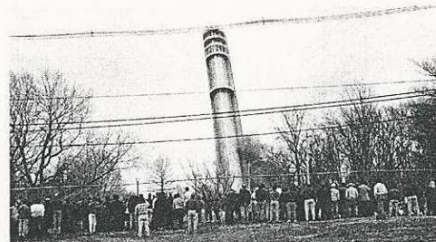
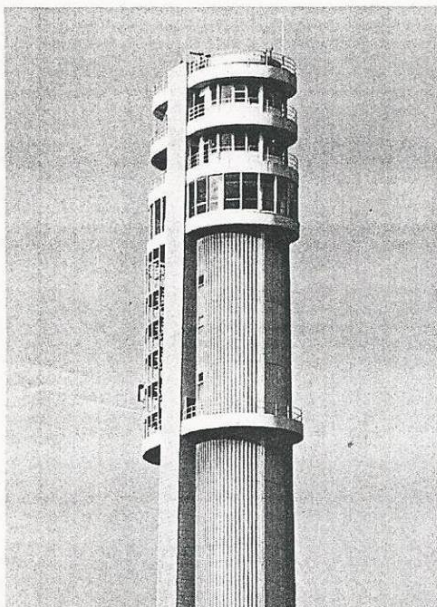


Photo by John Payne

We present here a selection of photographs of the Tower's last moments, contributed by ITT employees, witnessing the event from diverse vantage points.



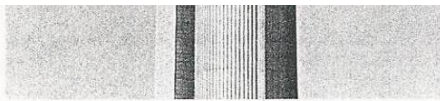


Photo by Barbara Heath

**Thursday, April 4, 1996
10:07 a.m.**

After almost 25 years of service as a research platform and 50 years as a New Jersey landmark, the dismantling of the ITT Research Tower marks a new era.

It is a sign of progress . . . where advanced technologies now permit research to be conducted in the lab or as computer models rather than in large structures such as the Research Tower.

We honor the work and dedication of all of the people who built the Tower, pursued important technologies and products and helped ITT become a vital part of America's defense.

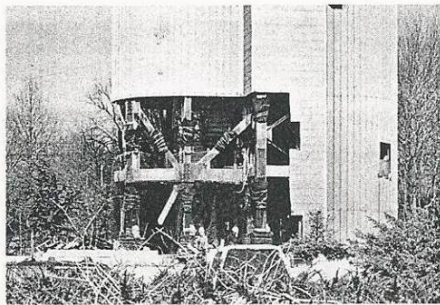


Photo by Don Polzo

Photo by Jim Ameo

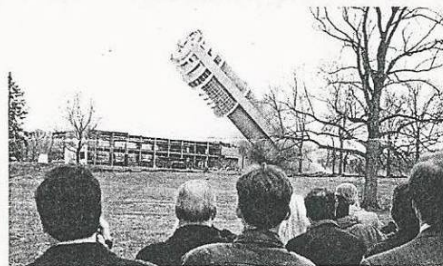


Photo by Don Polzo

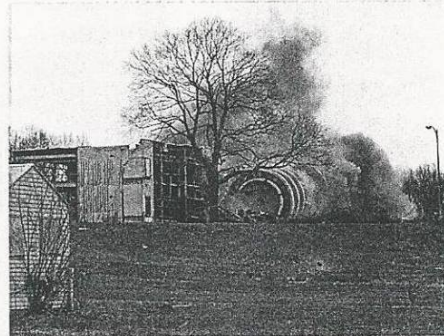


Photo by Don Roberts

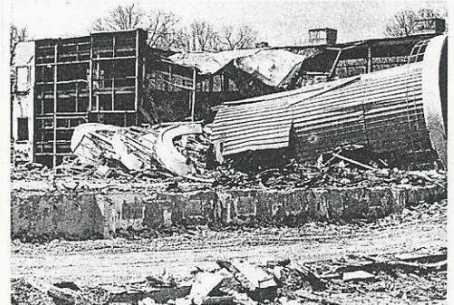


Photo by Ralph Pagan

Nutley Historical Society Archives

March/April 1996 ITT Avionics Journal

page four

ITT tower falls, 1996 ITT Avionics Journal, ITT Tower Demolition, 1947-1996

Lincoln Garage/Franklin Avenue at Harrison Street



Lincoln Garage Auto Repairing, Franklin Avenue at Harrison Street



The
Lindy Golf Course

— at —

395 FRANKLIN AVENUE

Next to Post Office Building

Announces

A New Admission Price of
15¢ During Day 25¢ Evenings

7 a. m. to 6 p. m.

6 p. m. to 12

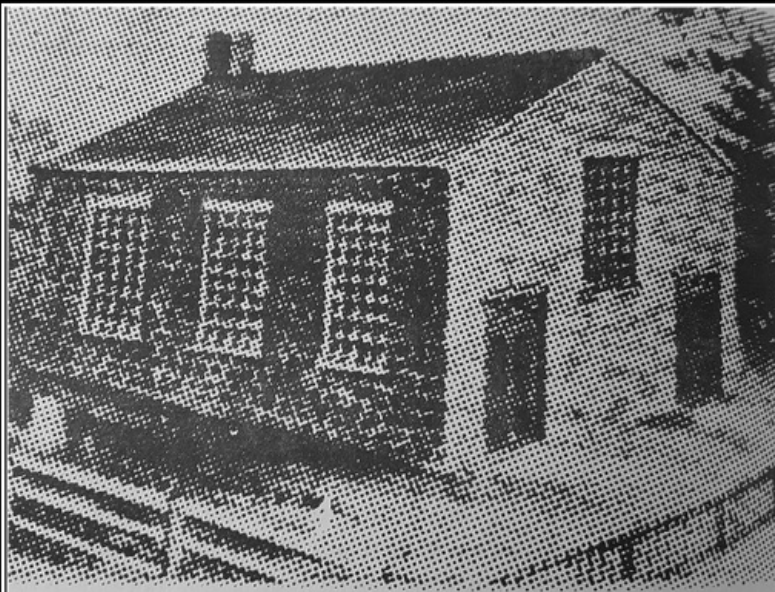
Photo © NutleyHistoricalSociety.org

GOLF COURSE OFFERED FOR SALE

— at —

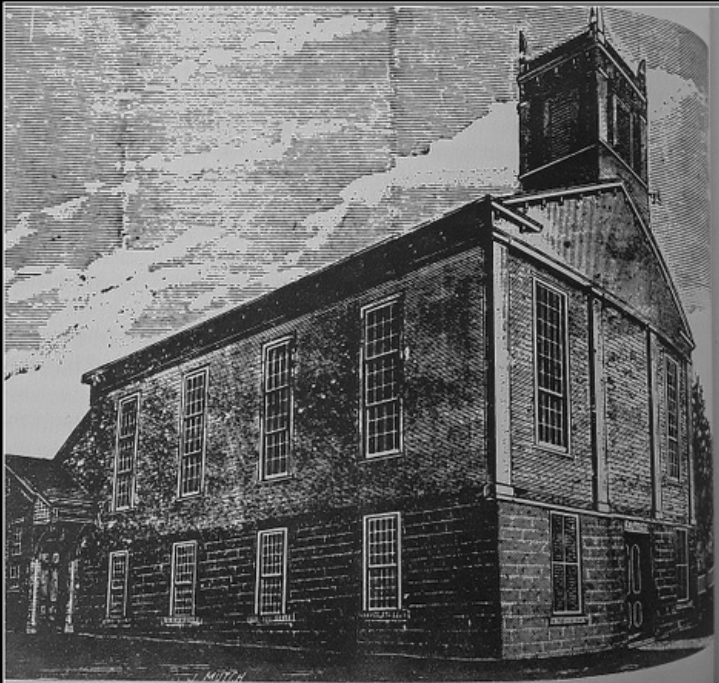
\$2,000 complete

Including Tennis Court, Office and Equipment



The First Church - 1829

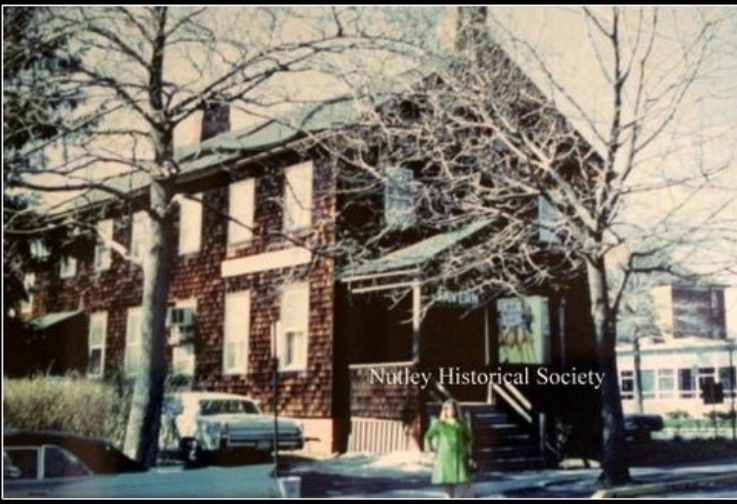
Methodist, The First Church 1829



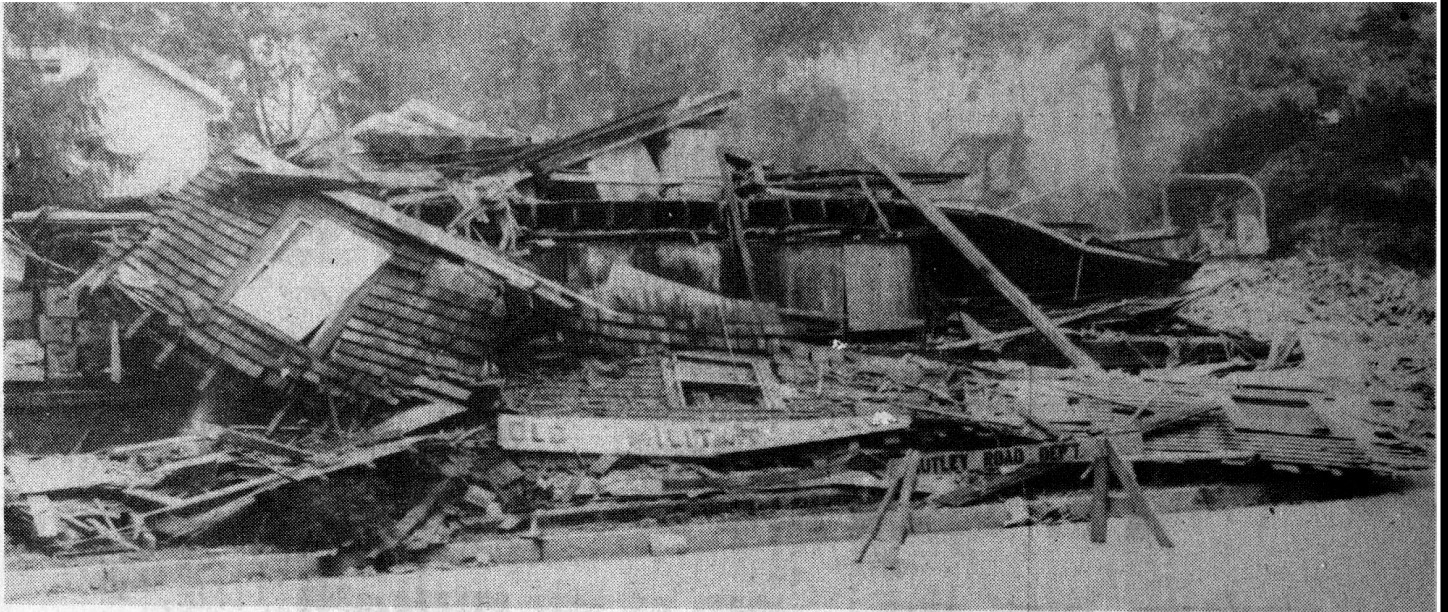
The Second Church - 1853

Methodist Church, Passaic Avenue, 1853

Military Hall Tavern



Old Military Hall



A Former Landmark — A bulldozer in the upper right portion of this photograph is almost hidden by the dust left when the final walls of the Military Hall came crashing to the ground last Thursday afternoon.

The structure was built by New Jersey's earliest settlers before the American Revolution.

Military Tavern Turned to Debris

Nutley Dairy Farms



Main business plant

Nutley Dairy Farms, Nutley NJ

Nutley Manor, Satterthwaite Estate



Nutley Manor, Satterthwaite Estate



Photo © NutleyHistoricalSociety.org

Nutley Manor, Satterthwaite Estate

Nutley Motor Sales, "It's Ford for '40"

Now On Display
The New 1940 Ford

"It's Ford for '40"
with
22 New Important Features

Including

- Finger Tip Gear Shift (Steering Post Control)
- Controlled Ventilation
- Sealed Beam Headlights
- Ride Stabilizer
- Larger and Roomier

The 1940 Ford Moves Steadily Onward in
STYLE ECONOMY COMFORT

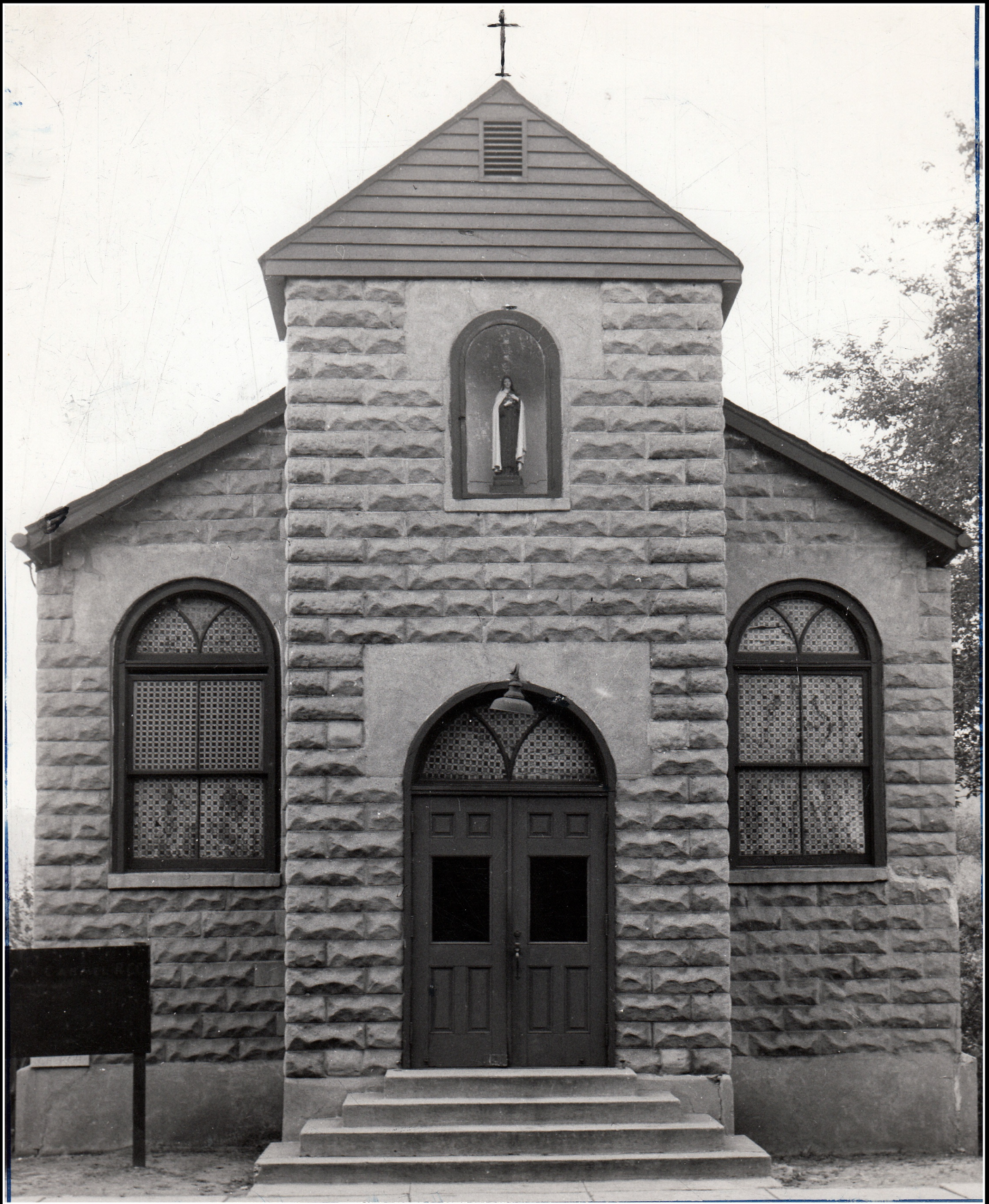
Come in today -- or tomorrow -- and see for yourself
just how far advanced the 1940 Ford is.

Nutley Motor Sales
180 CHESTNUT ST. NUTLEY, N. J.
Telephone Nutley 2-0803

Nutley Velodrome Bicycle and Midget Car Racing



Our Lady of Mt Carmel Roman Catholic Church, Franklin Avenue



Our Lady of Mt Carmel Roman Catholic Church



Park Avenue - Passaic-Avenue, intersection, Nutley NJ, Ron Coeyman photo

Park School/Nutley High School, Franklin Avenue



Park School, Nutley High, Nutley NJ

1894



Park School, Nutley High, Nutley NJ

The Sons of Italy in America Orphanage



The Order Sons of Italy in America Orphanage

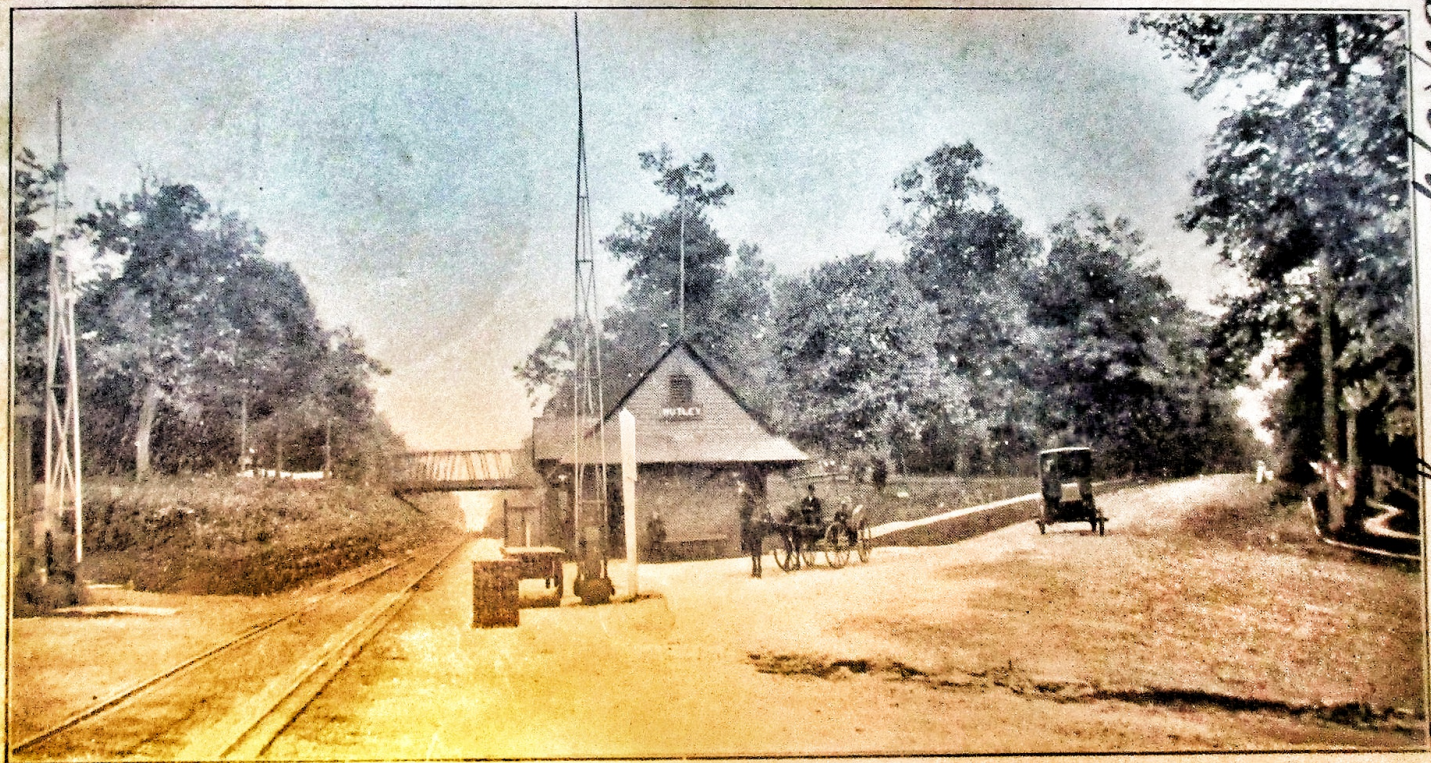
Walnut Street Railroad Train Station



WALNUT STREET STATION

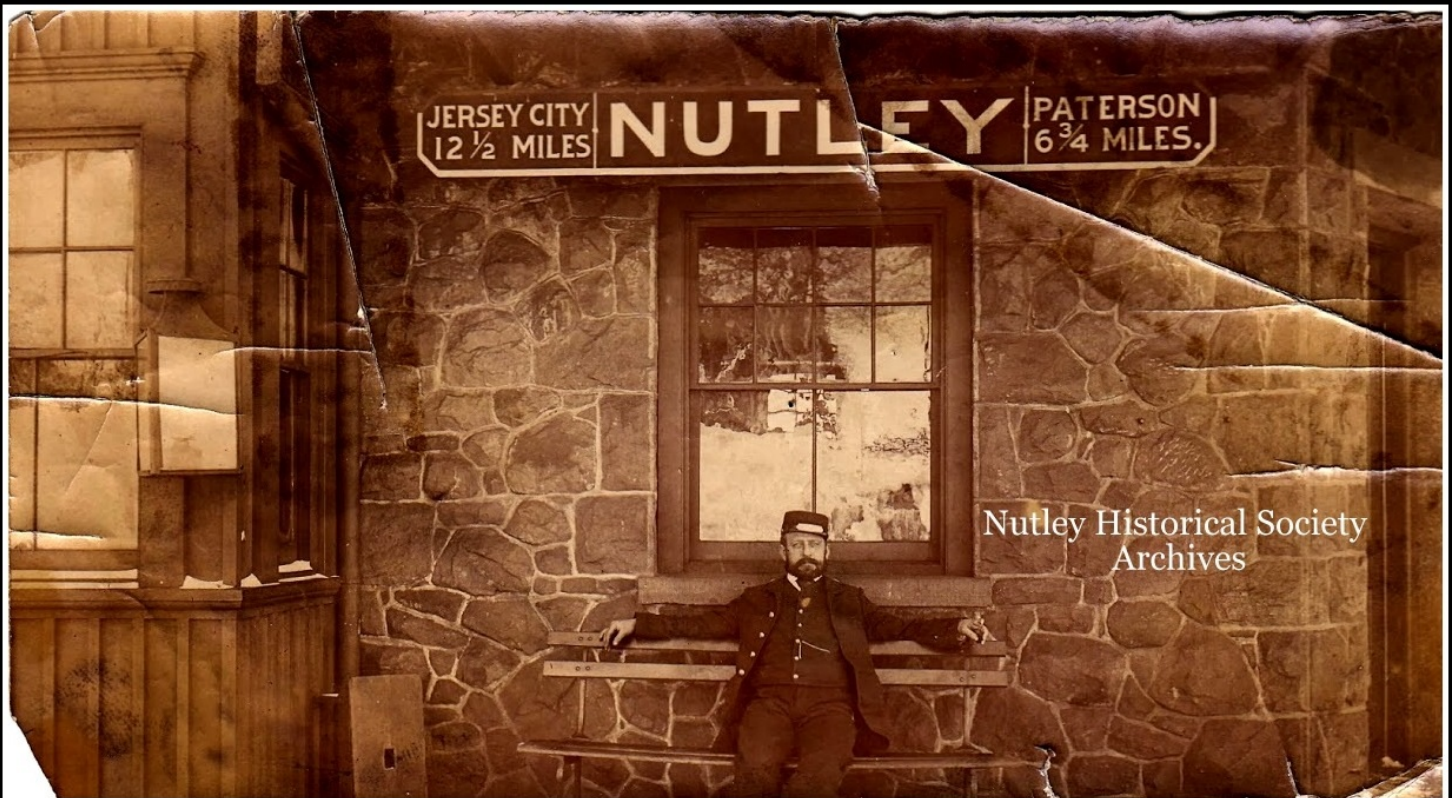
Walnut Street Station, Nutley NJ

Whitford Avenue/Highfield Lane Railroad Train Station



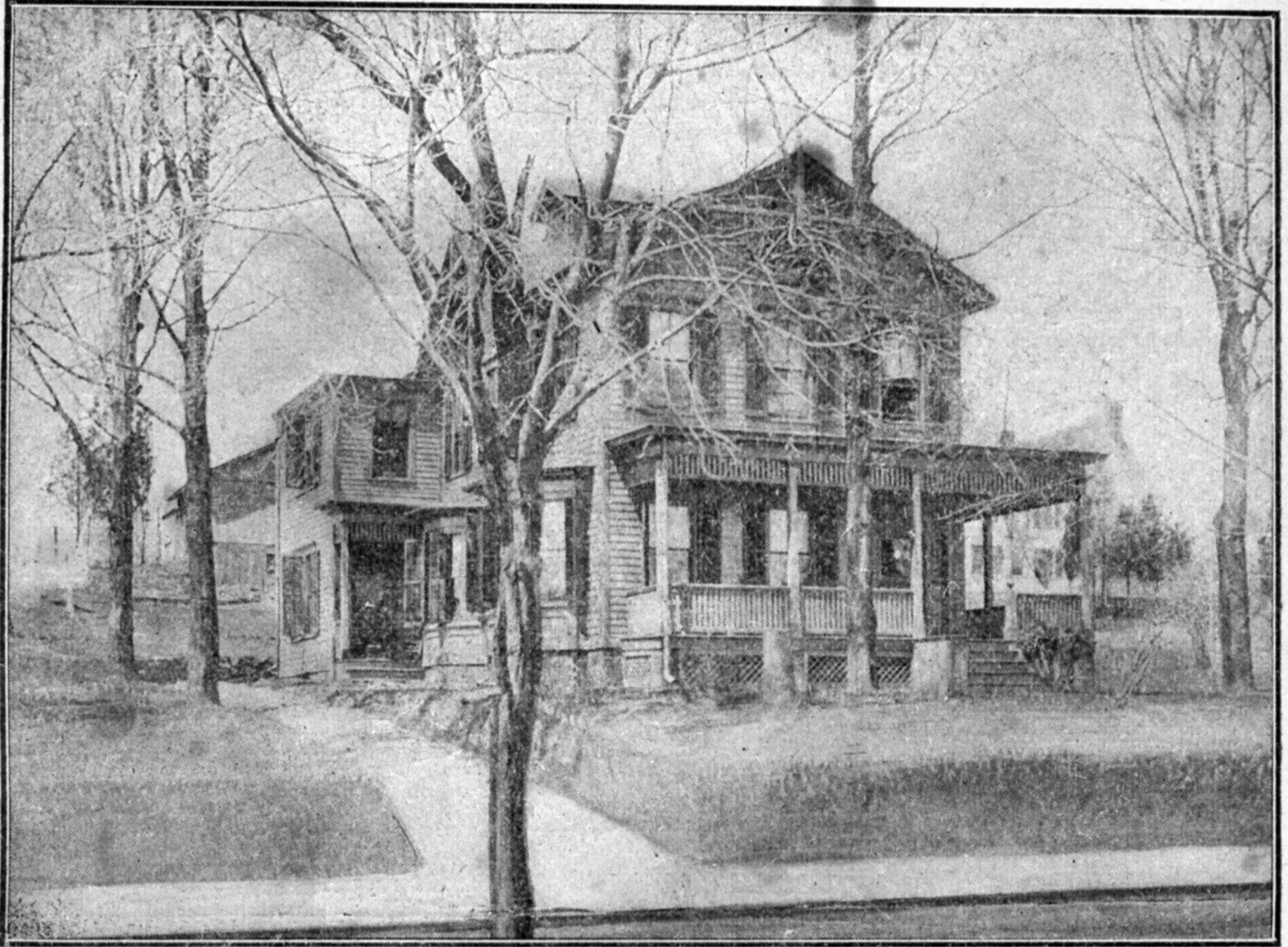
NUTLEY R. R. STATION.

Whitford Avenue, Nutley Railroad Station



Whitford Avenue, Nutley Railroad Station

Wickham Boarding House, Franklin Avenue at Vreeland Avenue



THE WICKHAM HOUSE

Boarding and Table Board

The Wickham House, Franklin Ave at Vreeland Ave

Yountakah Country Club



YOUNTAKAH COUNTRY CLUB.

Contributors: Town Historian John Demmer, David Wilson, Michael C. Gabriele, Patrick Mirucki, Ron Coeyman, Jack Falat, Anthony Buccino, John Simko, Barry Lenson, Ann A, Troy, Fred Young, Nutley Historical Society